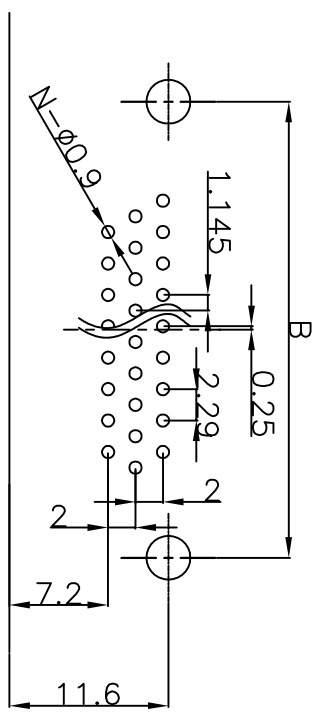
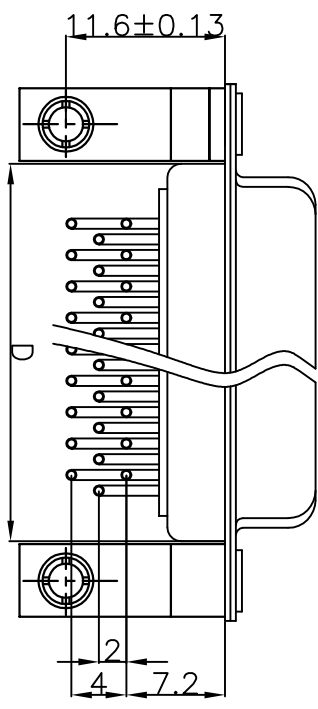
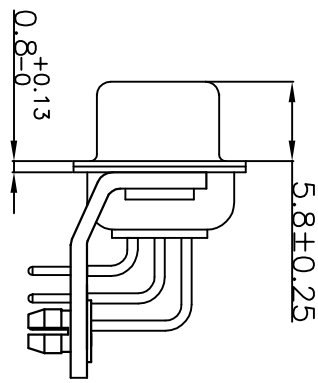
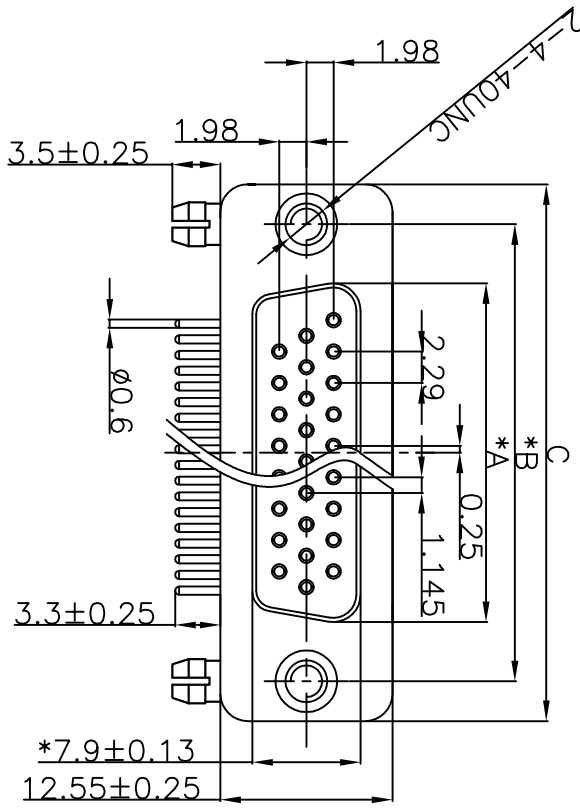


所用物料均符合ROHS标准

标“\*”为重点检验尺寸



P0(XXX)	A ±0.25	B ±0.13	C ±0.38	D ±0.25
015	16.33	24.99	30.81	19.28
026	24.66	33.32	39.14	27.51
044	38.38	47.04	53.04	41.28

NOTICE :

1. ELECTRIC:

- DIELECTRIC RATING: 300V
- CONTACT CURRENT RATING: 3AMP
- CONTACT RESISTANCE: 15mΩ MAX.
- INSULATION RESISTANCE: 1000MΩ MIN.at 500V DC
- DIELECTRIC STRENGTH: 500V AC RMS FOR 1MINUTE
- OPERATION TEMPERATURE: -55℃ ~ 125℃

2. MATERIAL:

- INSULATOR: PBT+30% G. F (UL94V-0)
- CONTACT: COPPER ALLOY
- CONTACT PLATED: GOLD FLASH OVER NICKEL
- SHELL: SPCC
- SHELL PLATED: NICKEL/TIN
- BRACKET: COPPER ALLOY PLATED Ni



**东莞市迅颢原精密连接器有限公司**  
Dongguan Signalorigin Precision Connector Co., Ltd

<b>TOLERANCE:</b> XX ±0.38 XXX ±0.25 XXXX ±0.13 X* ±0    XX* ±2		<b>DRAWN BY:</b> 杨剑玉 <b>DATE:</b> 2011.01.05		<b>PART NAME:</b> HDR XP 母 弯焊板式脚1.6支架 H=7.2	
<b>CHECKED BY:</b> 杨剑玉 <b>DATE:</b> 2011.01.05		<b>DRAW NO.:</b> XHV-06-01116		<b>PART NO.:</b> HDRXXXPH1100000900000072	
<b>APPROVED BY:</b> 胡超 <b>DATE:</b> 2014.11.05		<b>REMARK:</b>		<b>MOULD NO.:</b>	
<b>UNIT: mm [inch]</b> SCALE: 1:1 板					