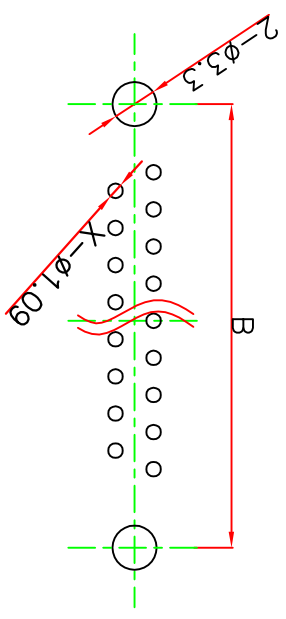
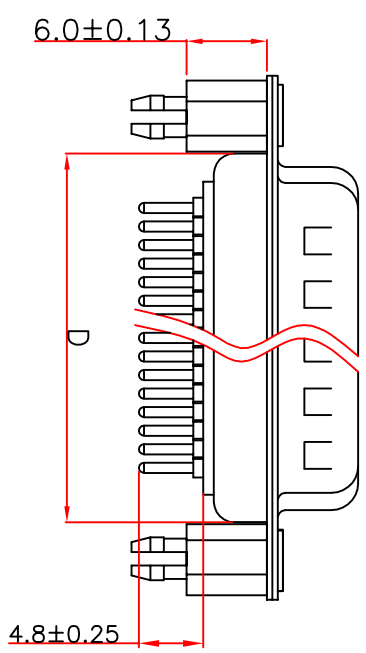
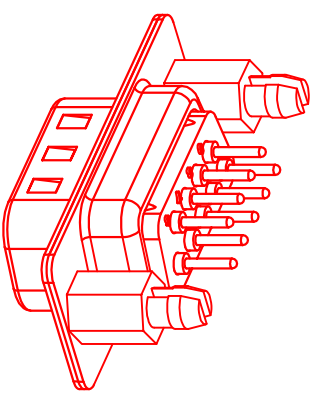
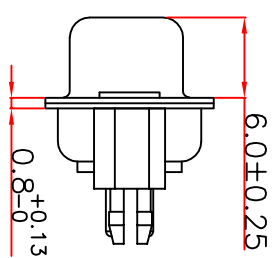
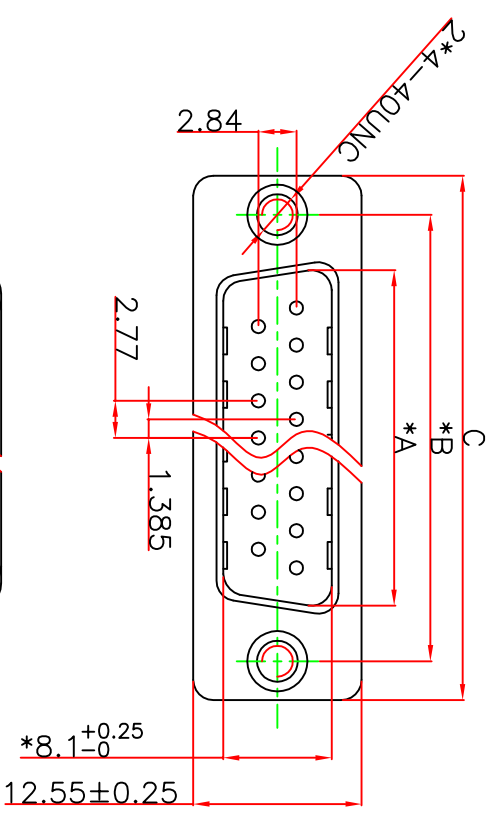


RoHS Component

"\*" Pivot Dimension

P0(XXX)	A ±0.25	B ±0.13	C ±0.38	D ±0.25
009	16.92	24.99	30.81	19.28
015	25.25	33.32	39.14	27.51
025	38.96	47.04	53.04	41.28
037	55.42	63.50	69.32	57.71



PCB LAYOUT

NOTICE :

- ELECTRICE:
  - DIELECTRIC RATING: 300V
  - CONTACT CURRENT RATING: 5AMP
  - CONTACT RESISTANCE: 15mΩ MAX.
  - INSULATION RESISTANCE: 1000MΩ MIN. at 500V DC
  - DIELECTRIC STRENGTH: 500V AC RMS for 1minute
  - OPERATION TEMPERATURE: -55°C ~125°C
- MATERIAL:
  - INSULATOR: PBT+30% G.F (UL94V-0)
  - CONTACT: COPPER ALLOY
  - CONTACT PLATED: GOLD FLASH OVER NICKEL
  - SHELL: SPCC
  - SHELL PLATED: NICKEL/TIN
  - FORK: COPPER ALLOY/PLATED NICKEL



**东莞市迅颢原精密连接器有限公司**  
Dongguan Signalorigin Precision Connector Co.,Ltd

<b>TOLERANCE:</b> XX ±0.38 XXX ±0.25 XXXX ±0.13 X*.45° X* ±2°		<b>DRAWN BY:</b> 杨冬梅 2009.08.22		<b>PART NAME:</b> DP XP 公 直焊板式柳6.0鱼叉	
<b>CHECKED BY:</b> 杨冬梅 2009.08.22		<b>DATE:</b> 2009.08.22		<b>DRAW NO.:</b> XHV-06-0009	
<b>APPROVED BY:</b> 胡超 2009.08.22		<b>DATE:</b> 2009.08.22		<b>PART NO.:</b> PDPXXXXMH050000900000000	
<b>UNIT:</b> mm [inch] <b>SCALE:</b> 1:1 <b>SIZE:</b> A4		<b>REMARK:</b>		<b>MOULD NO.:</b>	